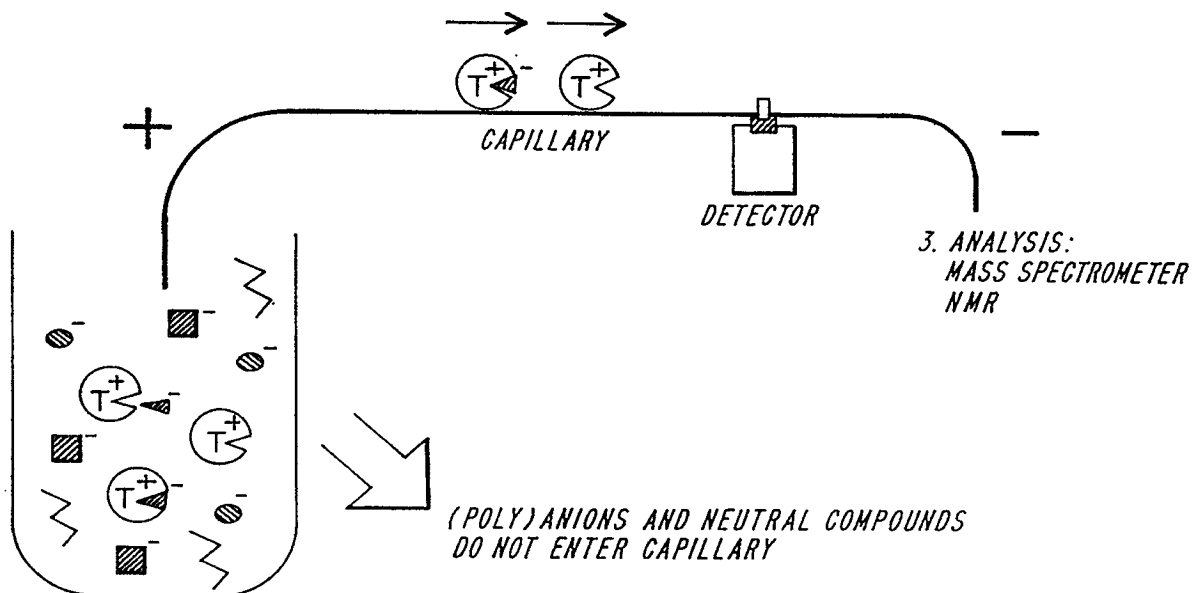


DESCRIPTION OF TECHNOLOGY

2. BOUND TARGET (OR COMPETITOR) IS SEPARATED FROM UNBOUND SPECIES

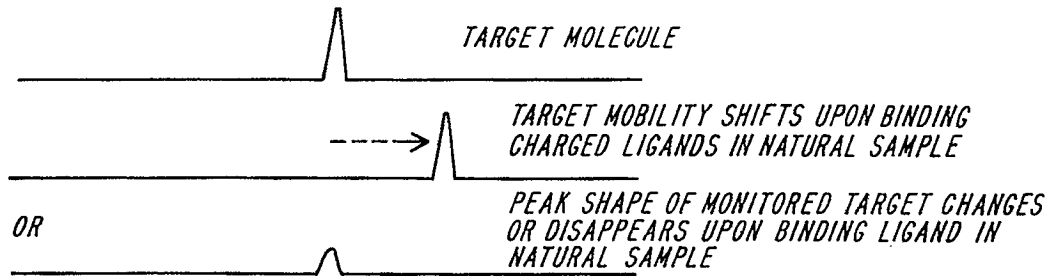


1. TARGET MOLECULE BINDS LIGANDS IN NATURAL SAMPLE

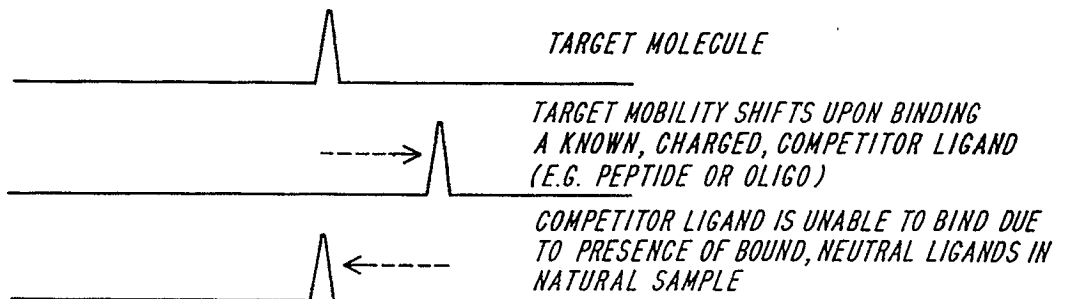
**FIG. 1**

2/12

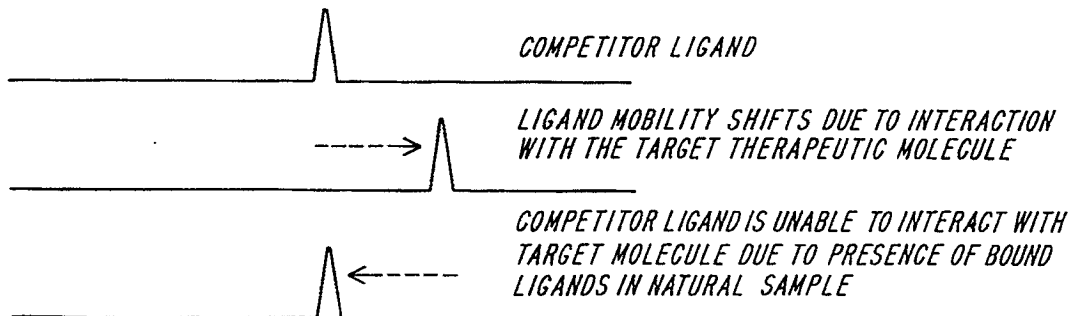
DIRECT BINDING: MONITOR THERAPEUTIC TARGET MOLECULE  
 → FOR DETECTING CHARGED LIGANDS

**FIG. 2A**

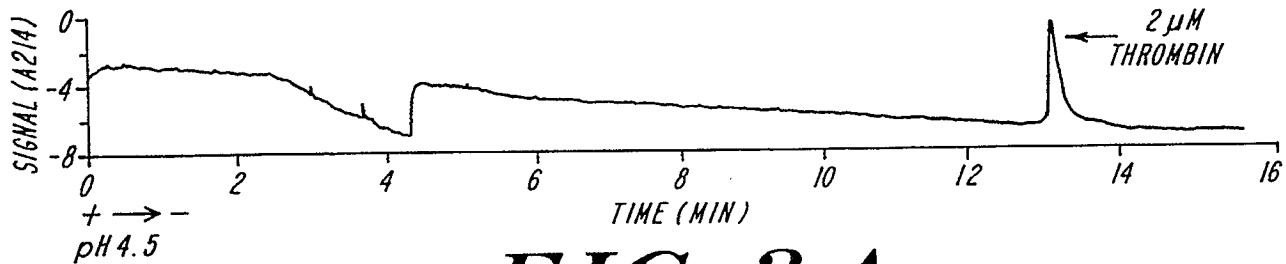
COMPETITIVE BINDING WITH KNOWN CHARGED LIGAND: MONITOR TARGET  
 → FOR DETECTING NEUTRAL LIGANDS

**FIG. 2B**

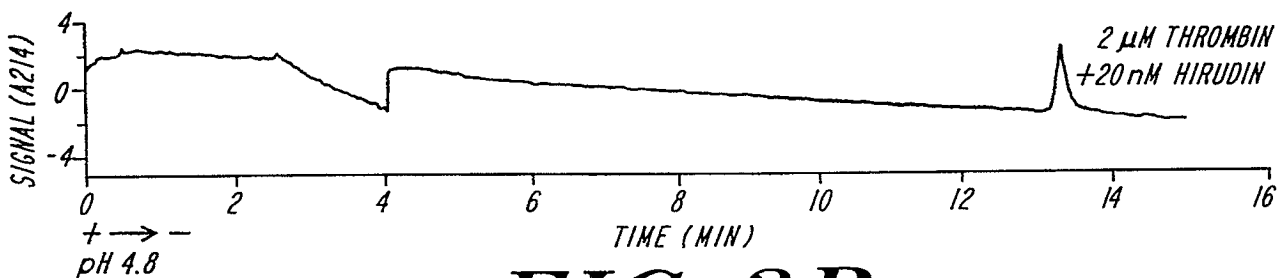
COMPETITIVE BINDING WITH KNOWN CHARGED LIGAND: MONITOR LIGAND  
 → FOR DETECTING NEUTRAL AND CHARGED LIGANDS

**FIG. 2C**

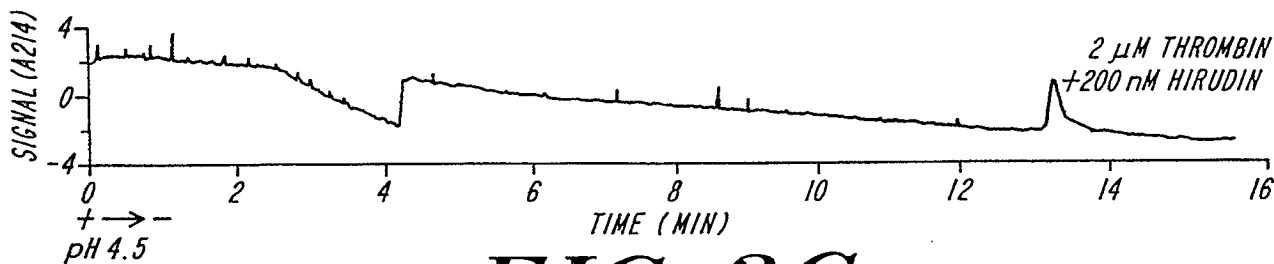
3/12



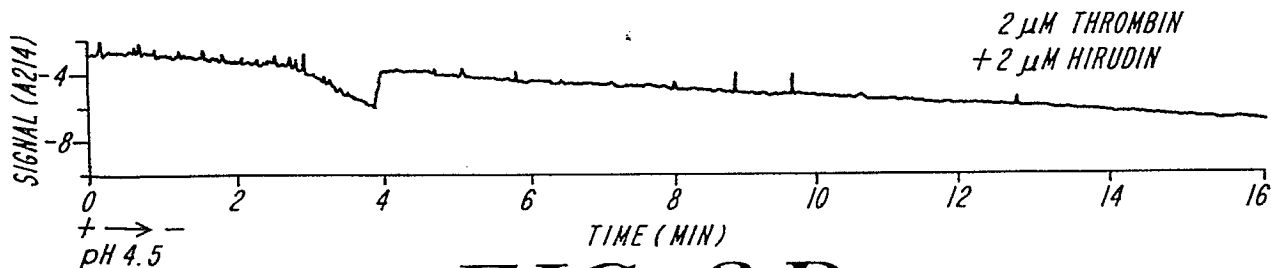
**FIG. 3A**



**FIG. 3B**

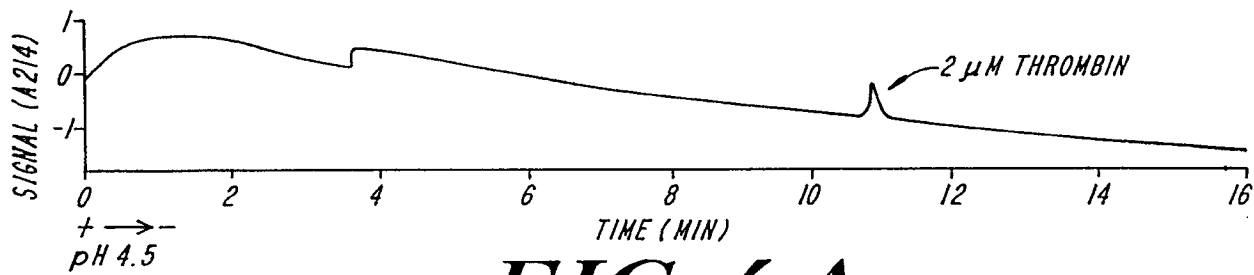
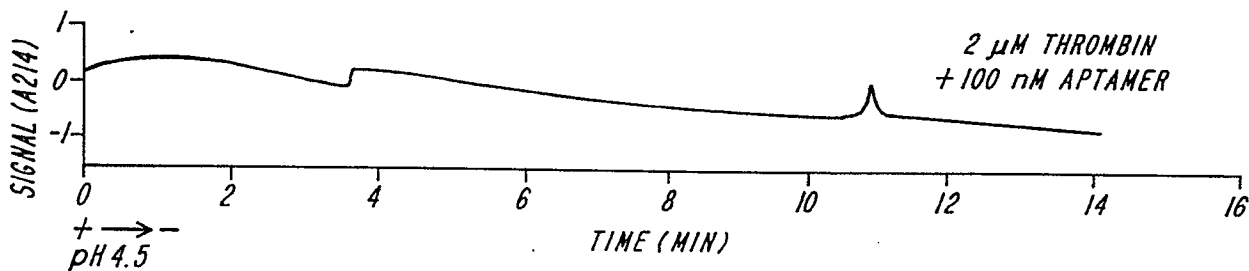
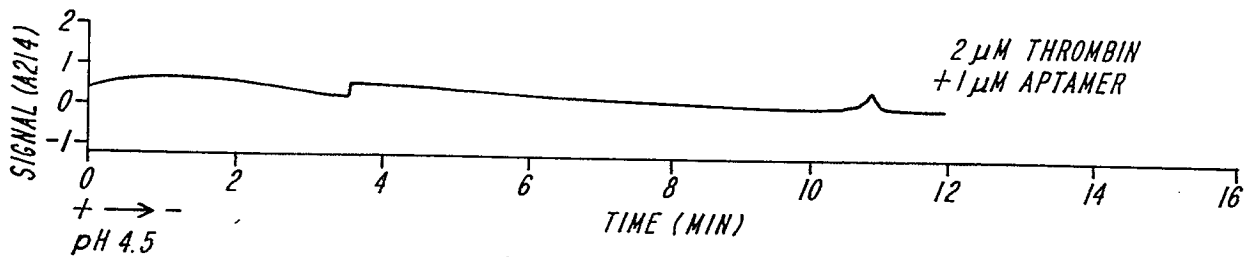
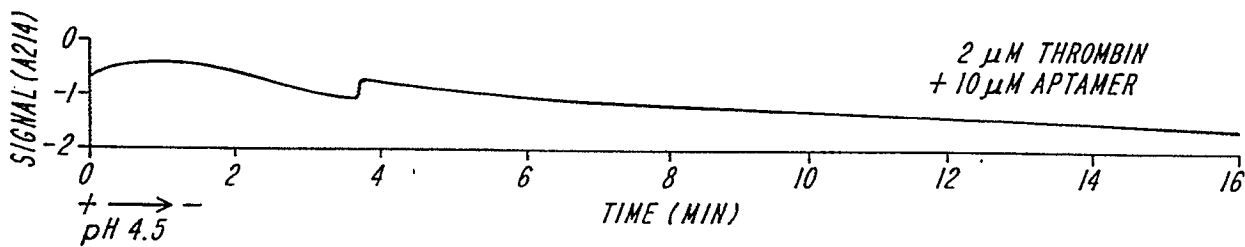


**FIG. 3C**

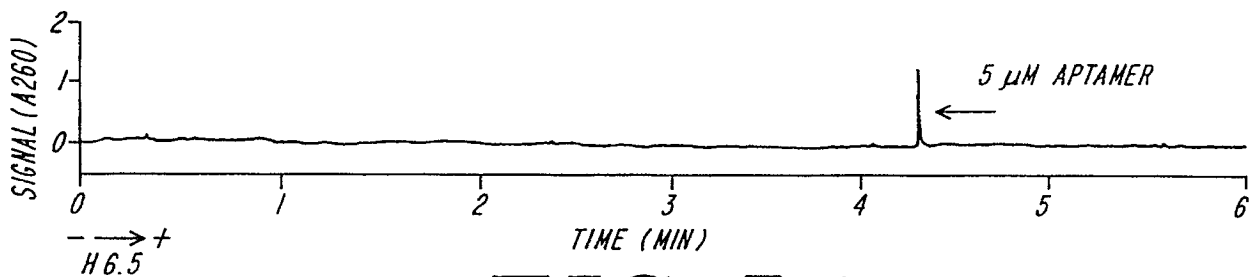


**FIG. 3D**

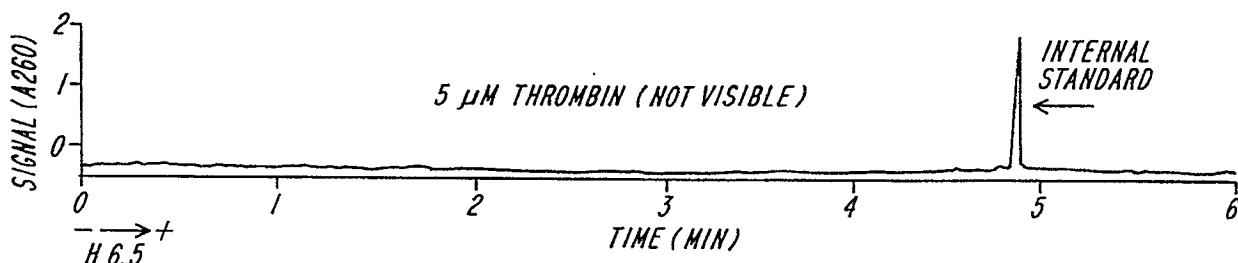
4/12

**FIG. 4A****FIG. 4B****FIG. 4C****FIG. 4D**

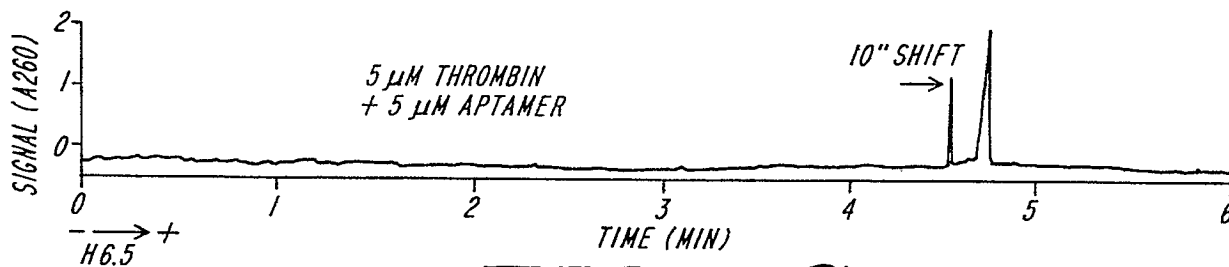
5/12



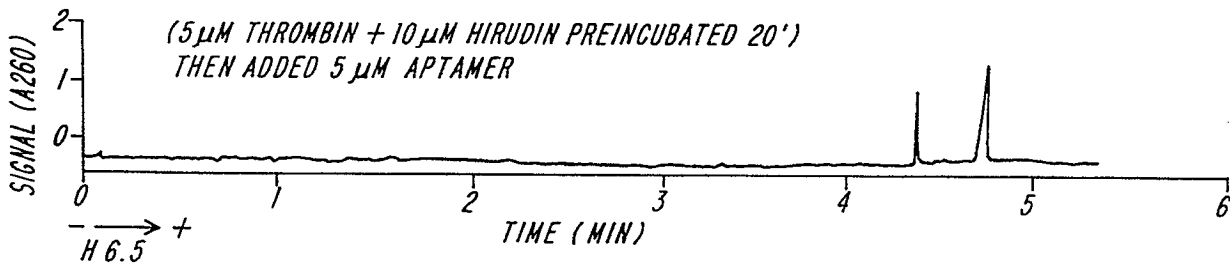
**FIG. 5A**



**FIG. 5B**



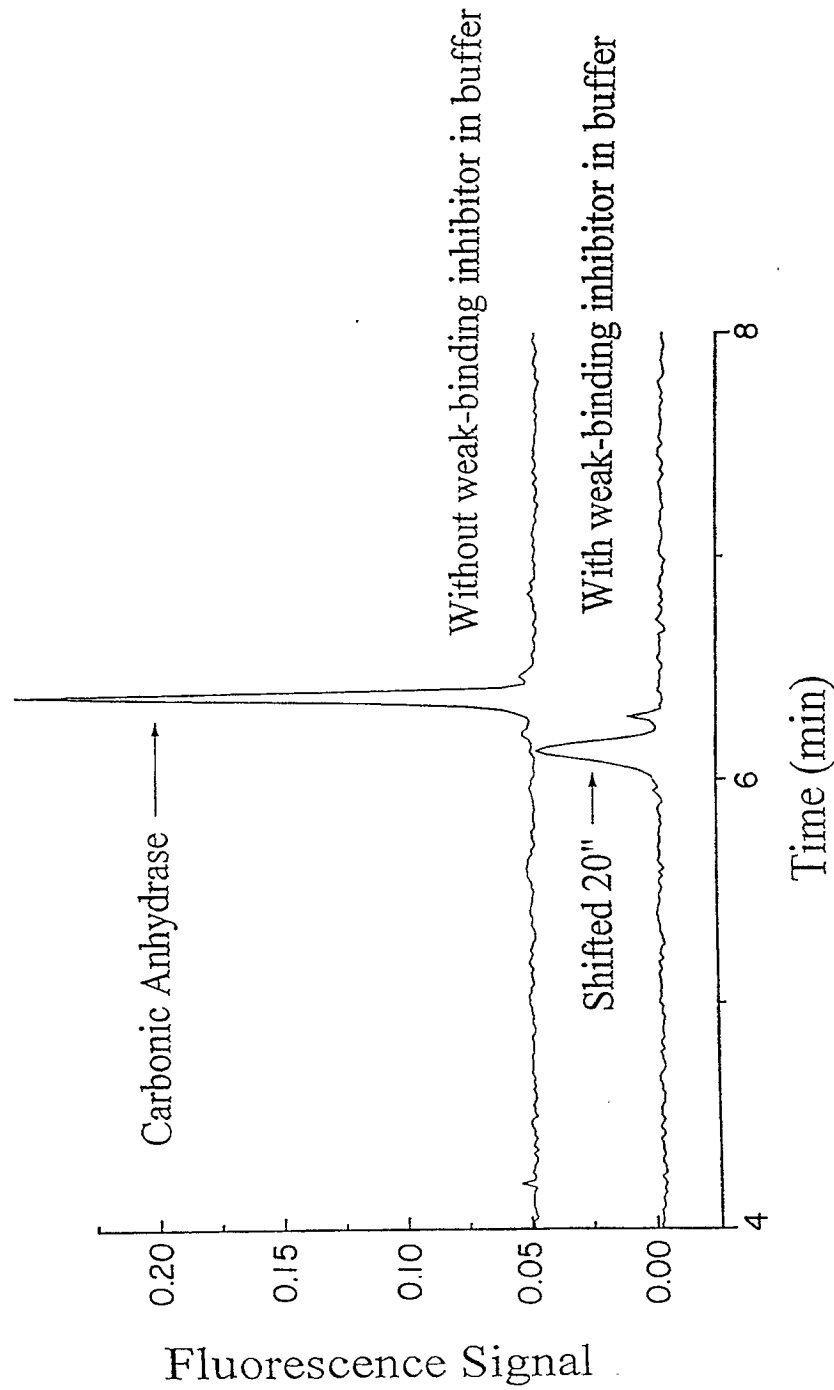
**FIG. 5C**



**FIG. 5D**

6/12

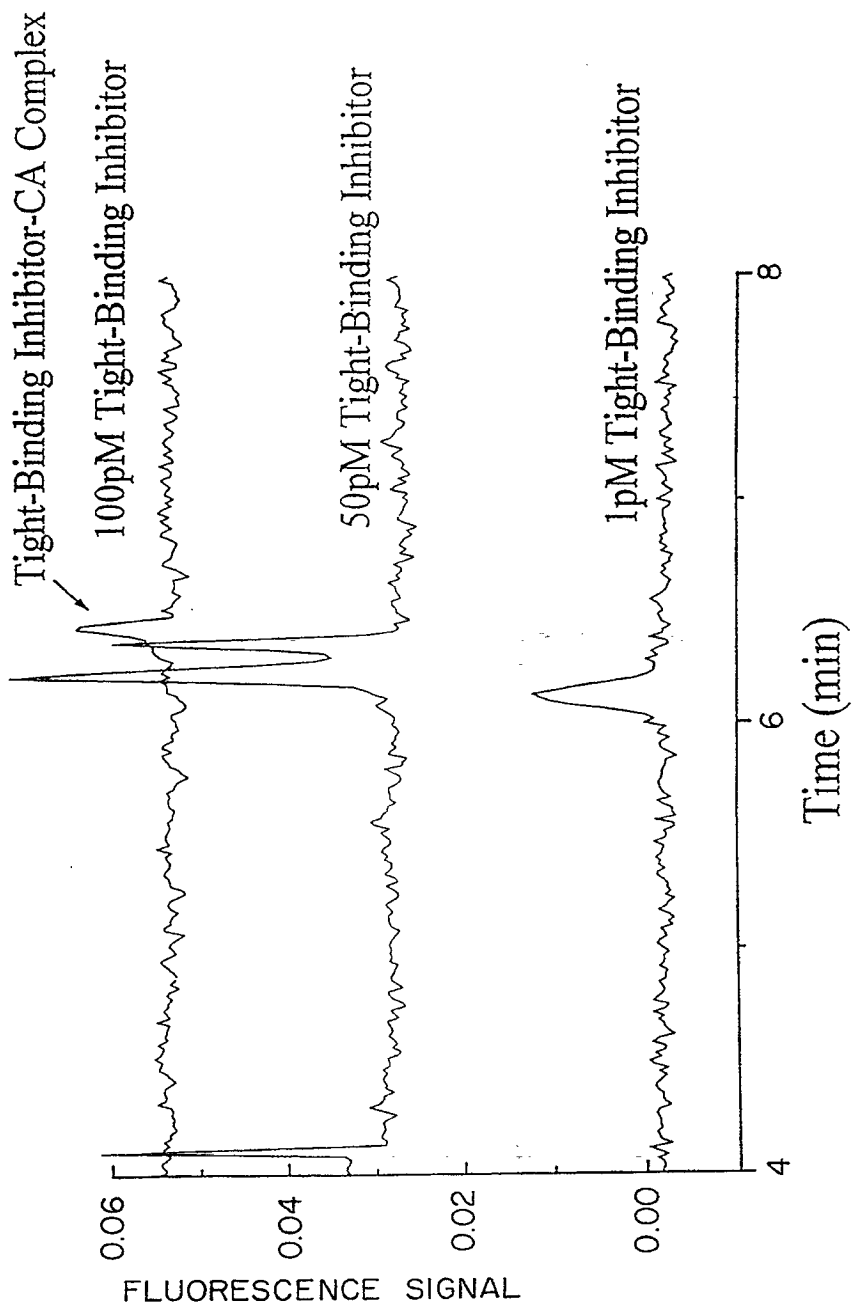
# Effect of Weak-Binding Inhibitor on Carbonic Anhydrase Migration



**FIG. 6**

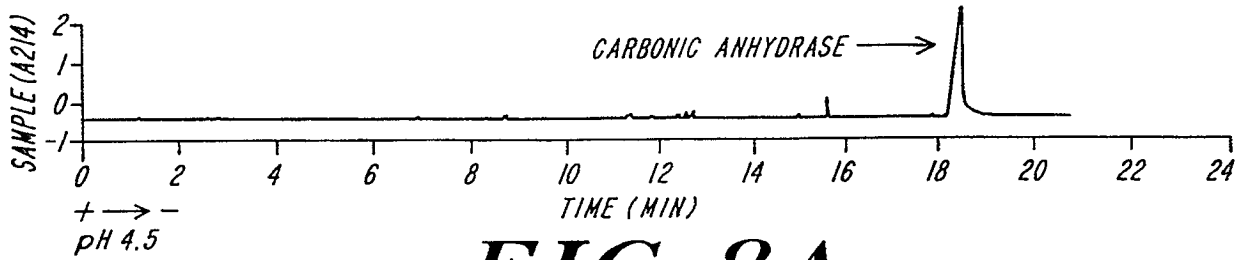
7/12

# Titration of Carbonic Anhydrase w/Tight-Binding Inhibitor Inhibitor (Weak Binding Inhibitor in Buffer)

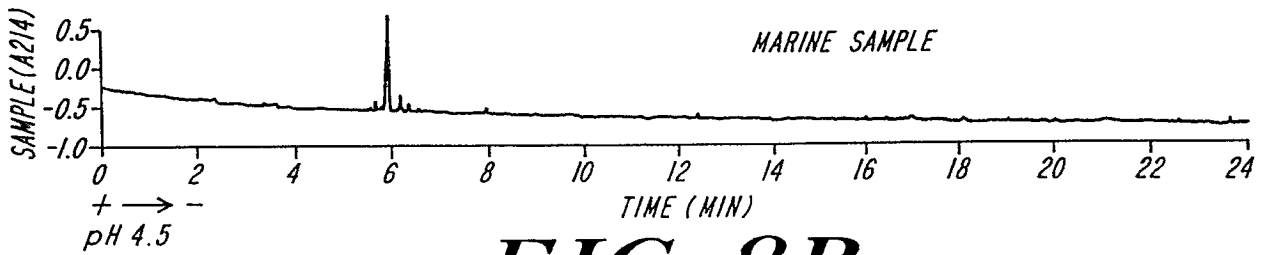


**FIG. 7**

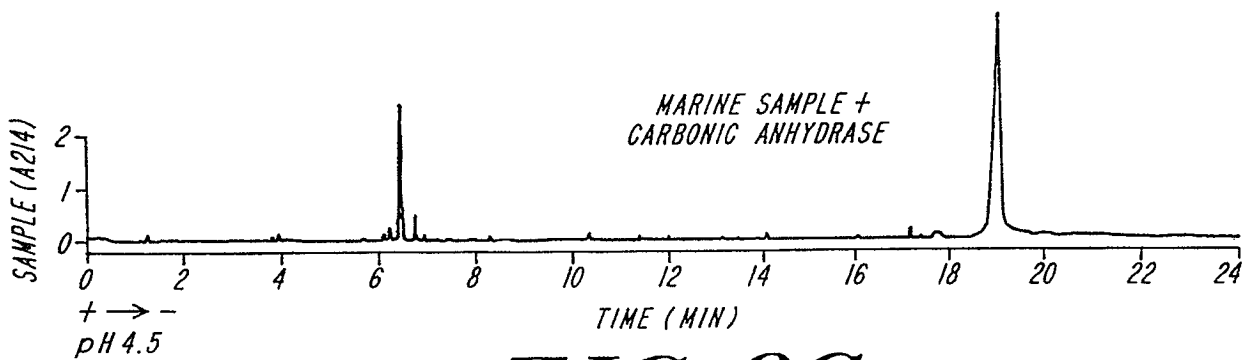
8/12



**FIG. 8A**

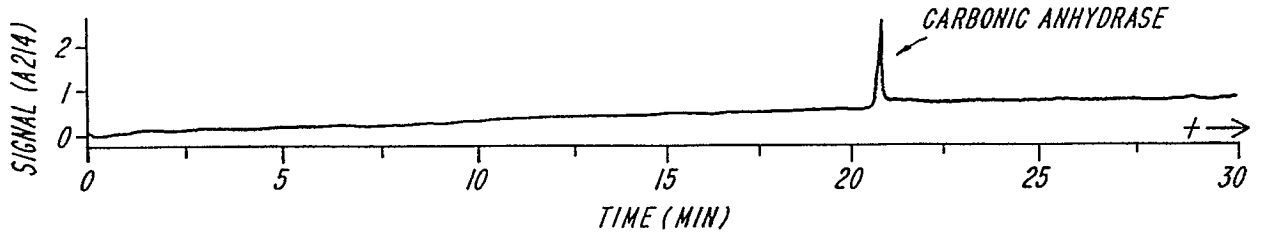


**FIG. 8B**

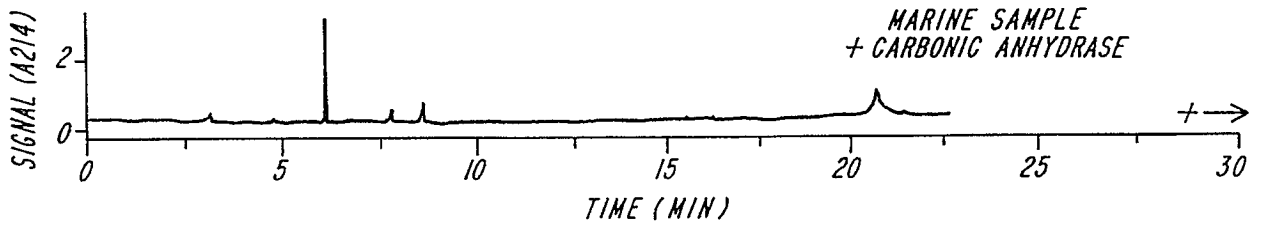


**FIG. 8C**

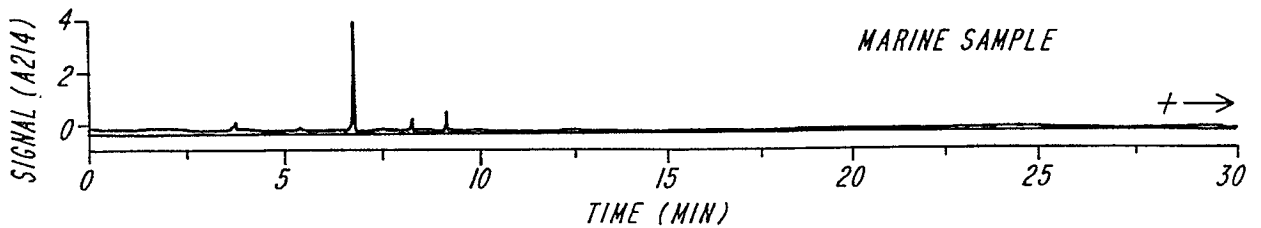
9/12



**FIG. 9A**

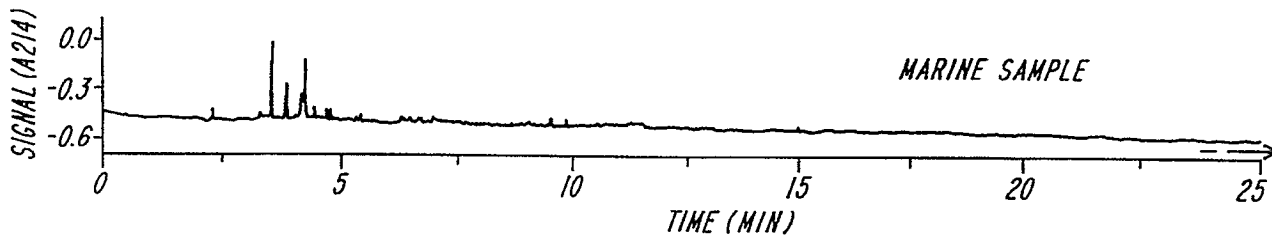


**FIG. 9B**

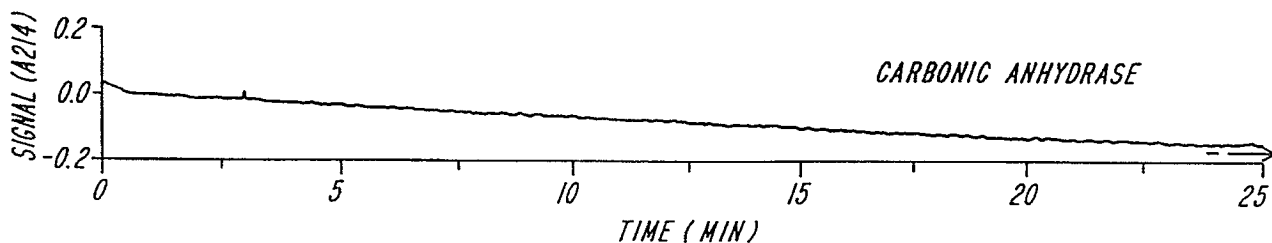


**FIG. 9C**

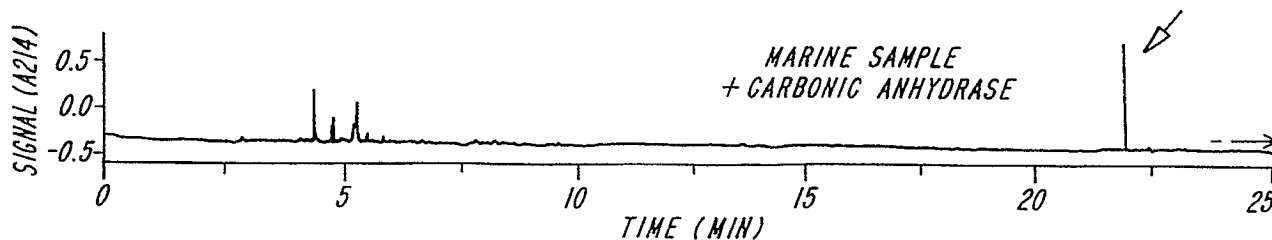
10/12



**FIG. 9D**

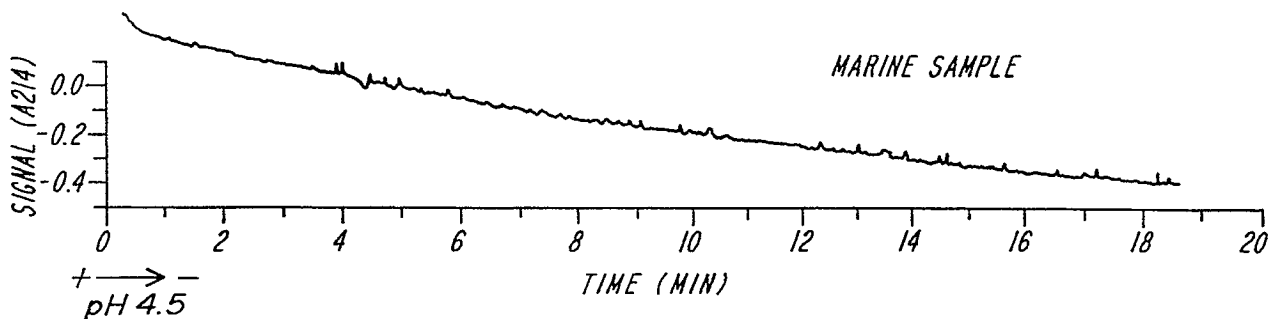


**FIG. 9E**

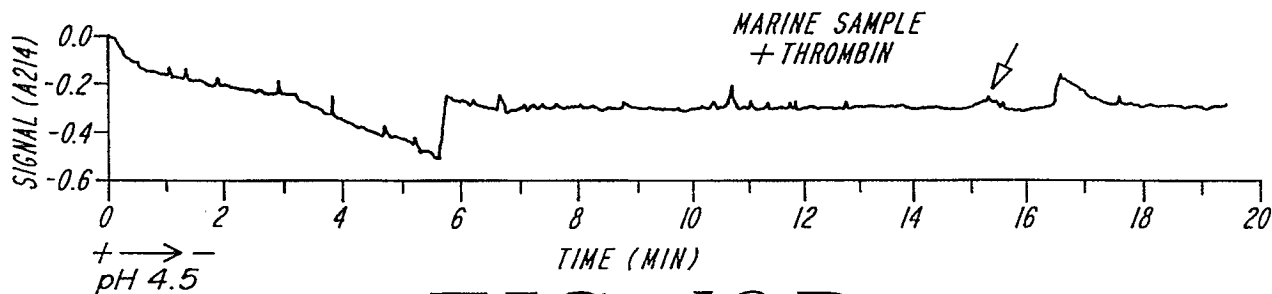


**FIG. 9F**

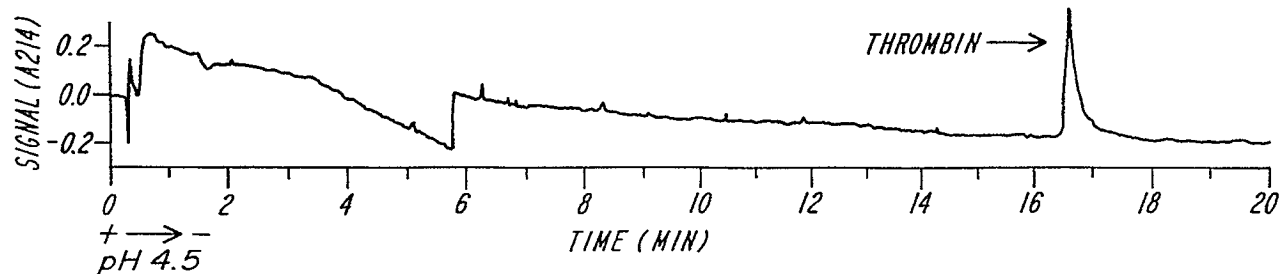
11/12



**FIG. 10A**



**FIG. 10B**



**FIG. 10C**

